

---

# HPLC COLUMN HEATERS

## **CROCO-CIL<sup>®</sup>**

+30°C to +99°C

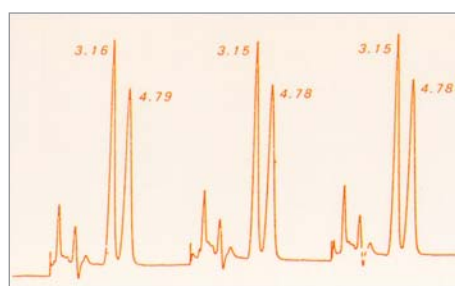
CALIBRATION - VALIDATION FUNCTION

YOUR HPLC COLUMN AT THE TRUE TEMPERATURE



1 Oven 100 040 220P    2 Oven 100 040 220TW with Rheodyne Valve 7725i    3 Electronic regulator

- ⇒ LINEARITY
- ⇒ REPRODUCIBILITY
- ⇒ CALIBRATION FUNCTION (CIL)



**REPRODUCIBILITY AT 75°C**

Variation rate of retention time < 1%  
Conditions : binary gradient

® = CLUZEAU INFO LABO

**C O M P A C T      P R A C T I C A L      A C C U R A T E**

---

# VALIDATION / QUALIFICATION

... it's much more convenient to do it yourself ...

**CROCO-CIL® = TEMPERATURE MASTER !**

Do you want to validate the temperature of your HPLC column heater yourself ? Introducing a new concept for auditing your CROCO-CIL® column heater : **Calibration Intelligence Linearisation (CIL)**.

The electronic regulator incorporates a LCD unit which displays both pre-set temperature chosen by the user (increment of 1°C) and actual temperature measured inside the oven (increment of 0.1°C). All CROCO-CIL® column heaters include the automatic temperature linearisation program which enables you to eliminate by yourself a possible discrepancy between the captor temperature displayed by 1/10°C, and the temperature measured in the oven by an independent calibrated thermometer.

**CROCO-CIL® all models below include electronic regulator**

## **S** **STANDARD CROCO-CIL® : Elevated temperature control**

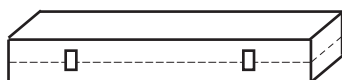
The opposite metal mesh beds guarantee uniform temperature spread as the metal acts as an ideal heat conductor while, at the same time, allowing air to circulate freely. (CIL patent)

**AMBIENT TO 99°C**



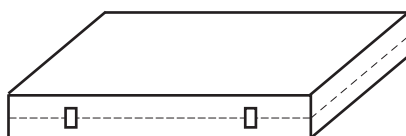
Short :  
25 x 8 x 8 cm  
**100-025-220P**  
Interne dim: 24(L)x 4.5(l) cm

Analytical column from 3 cm to 10 cm length and guard column



Standard :  
40 x 8 x 8 cm  
**100-040-220P**  
Interne dim: 38(L)x 4.5(l) cm

Any analytical column and microcolumn up to 30 cm length and guard column



Triple width :  
40 x 24 x 8 cm  
**100-040-220TW**  
Interne dim: 38(L)x 20(l) cm

Up to 15 analytical columns  
3 preparative columns of 20 mm I. D.



### Specifications for all models :

Temperature range	: ambient to 99°C
Stability (oven)	: +/- 0.2°C (recorded of 4 different spots in the oven)
Accuracy	: +/- 1°C
Temperature repeatability	: +/- 0.5°C
Temperature double security	: real time temperature checking every 2 seconds
Heat-up speed	: 5°C/min
Temperature on LCD	: 1-temperature set by increment of 1°C 2-temperature of the sensor by 0.1°C
Security sensor,	: - scrutinize on line the heaters and the - digital display of error message, cutoff, - automatic cutoff device at 115°C.
Communication	: Manual, RS232 and remote
Power	: 120VA
Line voltage	: 230V-50 Hz/115V-60Hz
Weight :	
Electronic control module	: 3.5 kg Oven : 1 to 5 kg

\* the specifications are not guaranteed at the extremes of the range



### 99SOFT

#### OPTIONAL SOFTWARE OF TRACEABILITY OF THE TEMPERATURE

FOR COLUMN HEATERS  
CIL Cluzeau Info Labo

Temperature recording : 40°C  
Starting time : 11/12/2003 10:14:16  
11/12/2003 10:14:46 ; 40 ; 40.0  
11/12/2003 10:15:16 ; 40 ; 40.0  
11/12/2003 10:15:46 ; 40 ; 40.0  
11/12/2003 10:16:16 ; 40 ; 40.0  
11/12/2003 10:16:46 ; 40 ; 40.0  
11/12/2003 10:17:16 ; 40 ; 40.0  
Ending time : 11/12/2003 10:17:25

TO ORDER : PN# 99SOFT

**amchro GmbH**

**Chromatographie- und Laborzubehör**

Hugo-von-Eltz-Str. 22  
D-65795 Hattersheim, Germany

Tel: (+49) (0)800 26 24 768

Fax: (+49) (0)800 26 24 763

email : info@amchro.com